

www.bycocoon.com

AMSTERDAM - BARCELONA - DUBAI - IBIZA
KUALA LUMPUR - NEW YORK

COCOON PROJECT DIVISION

info@bycocoon.com

T + 31 (0) 20 89 323 64

T + 31 (0) 6 29 32 22 51



COCOON
THE COLLECTIONS

PASSION
FOR
TIMELESS
DESIGN.



We believe in future classics, not temporary whims. Therefore, our designers also take the next generations into account. By always trying to use sustainable materials, our products will even make the difference after decades of use.

Our products are designed to make people happy, bring comfort and embrace personal identity. The idea is so pure that “Cocooning” is a true lifestyle. Nowadays, people have more need to be able to escape from the hectic and fast world we are living in and that is why home really should feel like home. A safe and warm place. A place where you come to rest, but also get inspired. A space for Transformation. A Cocoon...

WE ARE
COCOON.



100% RECYCLABLE

The AISI304 stainless steel we use for our bathroom taps is 100% recyclable. When a product made of this special material finally reaches the end of its long service life, it remains a valuable source of its main alloying elements chromium, nickel and molybdenum. These can be easily recovered and returned to the production process. Stainless steel recycling is an economically viable, self-sustaining process.



ECO FRIENDLY PRODUCTS

Selected for their durability and quality, the materials we use for our taps, basins and baths, guarantee a long life span and are Eco-friendly. Not only because the material itself is recyclable and lead-free, but also because we use special water saving techniques to keep the carbon footprint as small as possible.



LEAD FREE TAPS

COCOON cares for you and for the world.

The exposed parts are made of AISI304 stainless steel and are by nature LEAD FREE.

For projects in California and Vermont where special requirements of the California Health and Safety Code (commonly known as AB 1953) and Vermont Act 193 concerning lead in potable water systems apply,

COCOON can deliver 100% stainless steel build-in valves for the wall mounted basin mixers, to be fully compliant to these standards.



LOW ENVIRONMENTAL IMPACT

COCOON is proud to only use cold working methods for our stainless steel and solid surface material and does not influence global warming. The energy that powers the production is certified clean, water is saved and waste is separated to be recycled, to reduce the impact of the company on the ecosystem.



WATER SAVING

COCOON taps and showers can be ordered with a flow-limiting aerator, reducing water consumption without compromising experience. The result: a satisfying, voluminous flow that never exceeds 5 litres per minute, which is as kind to your pocket as it is to the environment.

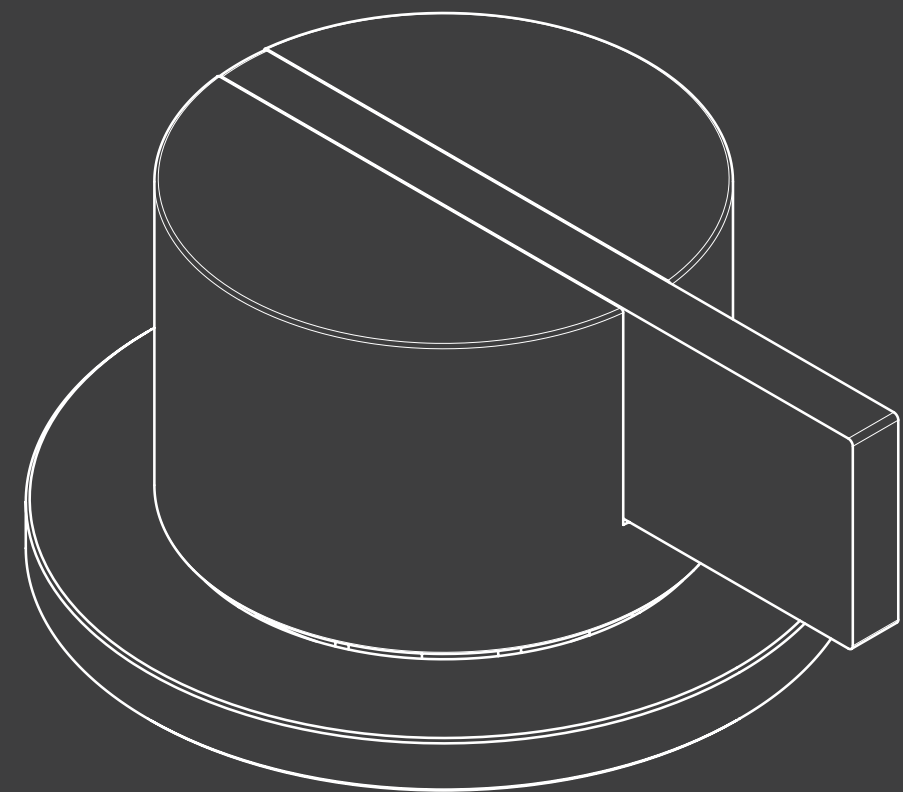
Using less water means less energy is required to heat the water. In addition to reducing your annual water consumption, installing a COCOON bathroom tap will help reduce your energy bills too.



CERTIFICATIONS

COCOON became an important reference within the sector for sustainable design and production. The components of our stainless steel tap collections, which are machined by high-tech equipment, are certified for their performance and safety by the most renowned Certifying Institutes in the world.

THE COCOON STANDARDS





PIETBOON.

Making timeless and sturdy design is only one side of the coin; By using real sustainable materials and having the right people shaping these into pieces of usable art, our products are engineered to last a lifetime.

In Italy near the idyllic Lago Maggiore, true craftsmen shape our taps and showers from noble stainless steel by hand and machine. New ideas from our designers offer a fresh look on tried and tested artisanal skills to make unique products according to traditional production values.

The production of our baths and made-to-measure basins takes place in our advanced workshop in the Netherlands. We definitely believe that the decades of combined experience will reflect in every single product we make.

HAND-
CRAFTED
QUALITY
WITH
SOUL.

COCOON has the pleasure of working with Studio Piet Boon®, one of the most renown Dutch design studios. Studio Piet Boon® creates bespoke contemporary architecture, interiors and product designs. Recognized worldwide for its exceptional craftsmanship, quality and vision, Studio Piet Boon® creates distinguished design.

Founded in 1983 by Dutch designer Piet Boon (1958), the Studio Piet Boon® philosophy is based on a balance between functionality, aesthetics and individuality. The ingredients that define the Piet Boon and COCOON experience. Suitable for every discipline, applicable to any industry.

Our PB SET 11 deck mounted basin tap is awarded 'Best of Catagory' at the prestigious Archiproducs Design Awards 2016.





RAW MATERIALS
THAT GET MORE
BEAUTIFUL
WITH AGE.



COCOON and Studio Piet Boon® share passion for craftsmanship, timeless design and natural materials that beautify with age. This mutual passion is captured in an exclusive collection of contemporary taps & basins: Shape by Studio Piet Boon.

Shape by Studio Piet Boon brings industrial chic to any kitchen or bathroom.



Inspired by the simplicity and symmetry of geometric shapes, the tap collection consists of an unconventional shaped faucet and soft clear contoured mixer that comprises of two isolated components, intuitively instructing how to be operated.

The basin collection is available in sustainable materials; LG Himacs®, Corian® and Composite with colors ranging from Alpine white to Dark Concrete.

SUSTAINABLE MATERIALS SHAPED INTO PIECES OF USABLE ART

A high-contrast, black and white photograph of a turbulent ocean. The water is dark and textured with numerous small waves and ripples. A prominent white wave crest is visible in the upper left, and another smaller one is in the upper right. A thin white circle is superimposed on the left side of the image, containing the text.

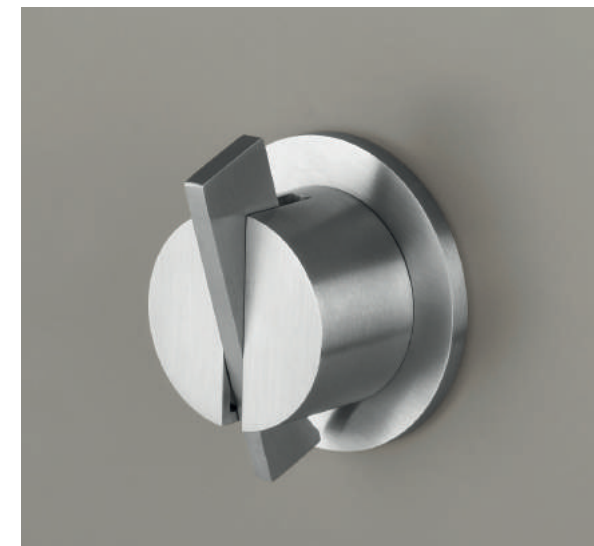
SIMPLICITY IS
THE ULTIMATE
SOPHISTICATION
LEONARDO DA VINCI

STAINLESS STEEL

PIETBOON. STAINLESS STEEL DESIGN



PB SET 24



PB 01



PB 10

Stainless steel offers many advantages to the architectural and high demanding user, including its high corrosion resistance and durability.

The aesthetic appearance of this ECO friendly and LEAD FREE material provides a modern and attractive base for our minimalistic tap collection designed by Piet Boon

Available in brushed stainless steel, and the exclusive 'Raw Copper' and 'Gunmetal Black' finishings

MAKE THE
DIFFERENCE
AFTER DECADES
OF USE

STAINLESS STEEL

PIETBOON. STAINLESS STEEL DESIGN



PB SET 01



PB 30



PB 31

PB 03

PB SET 23



PB 11



PB SET 11

archiproducts
DESIGN AWARDS
—
BEST of CATEGORY
2016



STAIN
LESS
STEEL
IMPRESSIONS



RAW COPPER

PIETBOON. STAINLESS STEEL DESIGN



PB SET 01 RAW COPPER



PB 05 RAW COPPER



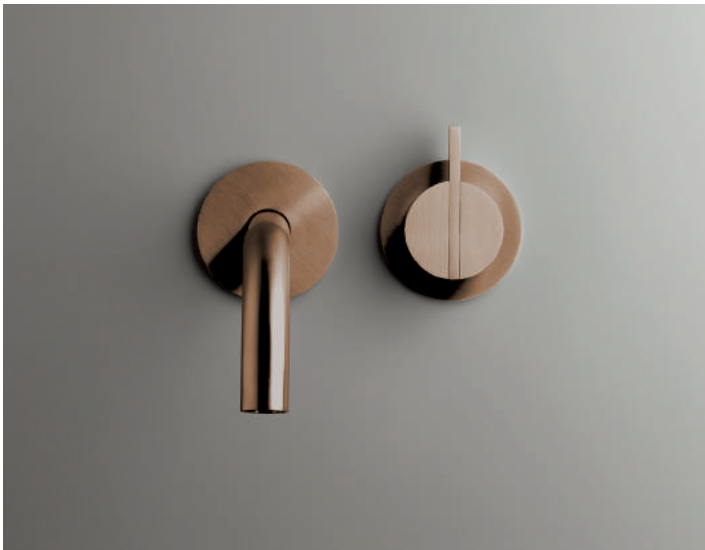
PB SET 01 RAW COPPER

Add some refined sophistication to your bathroom with our new Raw Copper taps. Different from what is common in the market, the exclusive finishings by COCOON are applied on a 100% stainless steel base instead of a coating on brass. Due to patented PVD processes, our finishing is merged with the stainless steel surface retaining and even increasing all of the sustainable and durable properties COCOON taps are known for.

WHEN
WATER
MEETS
FIRE.

RAW COPPER

PIETBOON. STAINLESS STEEL DESIGN



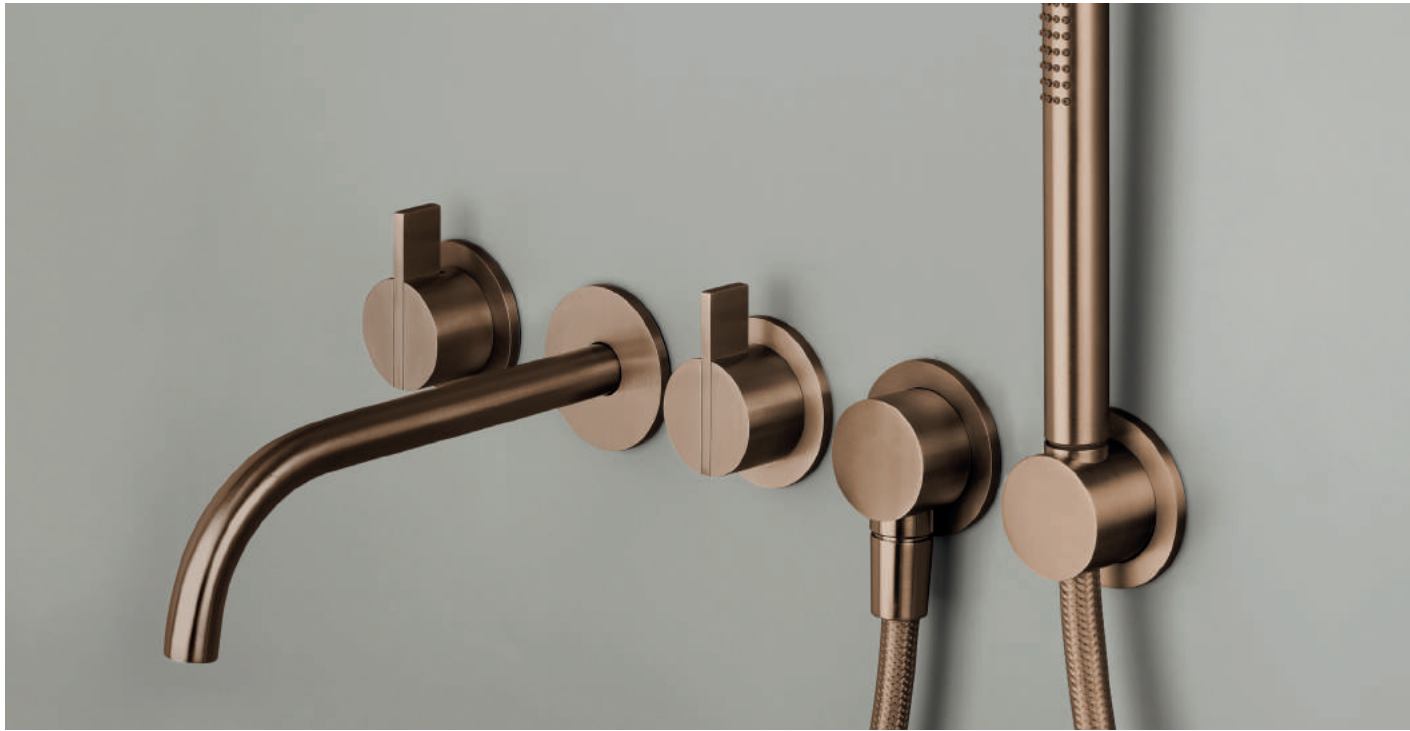
PB SET 01 RAW COPPER



PB 04 RAW COPPER



PB 30 RAW COPPER



PB SET 24 RAW COPPER



PB 31 RAW COPPER



PB 10 RAW COPPER



PB 33 RAW COPPER



PB SET 23 RAW COPPER

RAW COPPER

IMPRESSIONS



GUN METAL BLACK

PIETBOON. STAINLESS STEEL DESIGN



PB SET 21 GUNMETAL BLACK

The industrial chic 'Gunmetal Black' combines perfectly with our COCOON solid white baths and basins. The characteristic appearance of the hand brushed stainless steel enriches the experience of the exclusive finishings, adding depth and soul to the surfaces.



PB SET 32 GUNMETAL BLACK

EXCLUSIVE
FINISHINGS
BY COCOON

GUN METAL BLACK

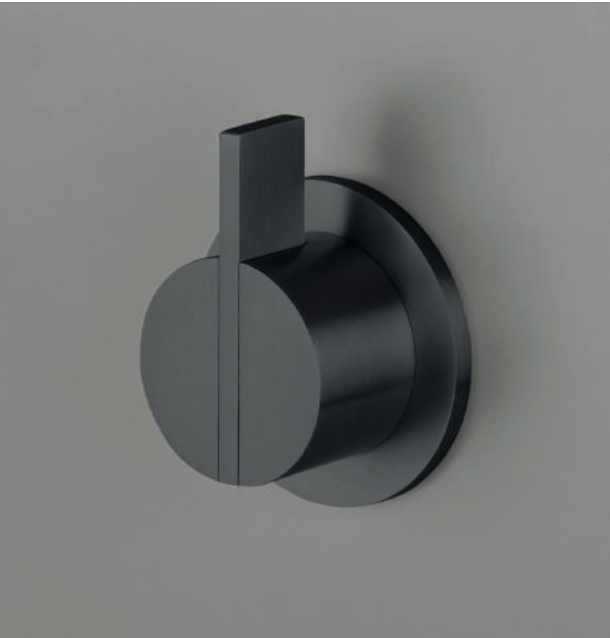
PIETBOON. STAINLESS STEEL DESIGN



PB SET 01 GUNMETAL BLACK



PB 31 GUNMETAL BLACK



PB 01 GUNMETAL BLACK



PB SET 24 GUNMETAL BLACK



PB SET 11 GUNMETAL BLACK



PB SET 01 GUNMETAL BLACK



PB SET 11 GUNMETAL BLACK



PB SET 11 GUNMETAL BLACK

GUN METAL BLACK

IMPRESSIONS





PIET **BOON.**
BASINS & CABINETS



MODEL 4.1 BASIN WHITE HIMACS / MINIMAL CABINET WHITE HIMACS



MODEL 1.1 BASIN WHITE HIMACS
PIET BOON CABINET WHITE HIMACS



MODEL 1.1 BASIN COMPOSITE QUARTZ

Studio Piet Boon designed an exclusive made-to-measure collection of basins and cabinets for COCOON. All basins have the golden geometric ratio and are equipped with a removable plateau covering the drain making the basin an interesting and functional 'landscape'. The cabinets can be equipped with Corian or Hi-macs fronts and are produced using the best German quality hinges.

PIETBOON. BASINS & CABINETS



MODEL 3.1 BASIN WHITE HIMACS | MINIMAL CABINET WHITE HIMACS | PB SET01 GUNMETAL BLACK



MODEL 2.2 BASIN WHITE HIMACS | MINIMAL CABINET WHITE HIMACS | PB SET 11 RAW COPPER



MODEL 2.2 BASIN WHITE HIMACS | PIET BOON CABINET WHITE HIMACS | PB SET 11 GUNMETAL BLACK



WORK IN PROGRESS

PASSION FOR CRAFTSMANSHIP

A vertical landscape photograph showing a deep mountain valley. In the foreground, a rocky riverbed with a small waterfall flows towards the viewer. The valley walls are steep and covered in dense green vegetation. In the background, a tall, narrow mountain peak rises into a misty or foggy sky. A thin white circle is superimposed on the left side of the image, containing the text 'FEEL LIKE HOME AND GET INSPIRED'.

FEEL LIKE
HOME
AND GET
INSPIRED

REFERENCE PROJECTS

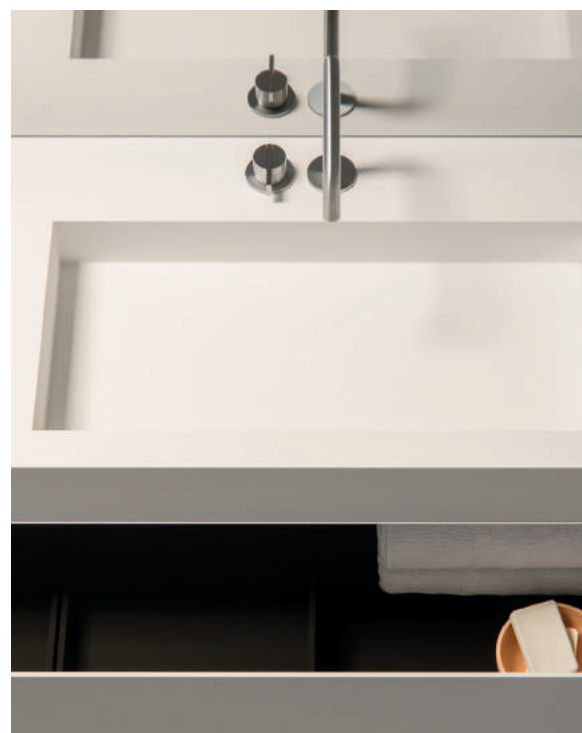
BY COCOON



LOFT IN PARIS









PROJECTS IN PROGRESS



105 LUXURY CONDOMIUMS IN KUALA LUMPUR



ICEHOTEL SWEDEN